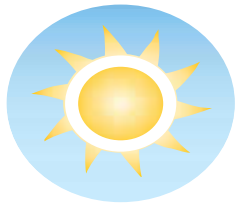


TODAY'S WEATHER

HIGH 69
LOW 50



TUESDAY'S WEATHER

HIGH 59
LOW 34



FORECAST PAGE 2

INSIDE



AUTO

The Subaru Legacy GT offers the best of both worlds. Page 7



SPORTS

2006 marks the first time the county has had more than two playoff-bound football teams. Page 9



Ohio 521 is closed east of Skinner Road for a culvert replacement project. Detours will be posted during the two-week closure. The work is scheduled to be completed by Nov. 8. For more information, contact the Ohio Department of Transportation at 740-833-8063.

Wilson Road will be closed between North Galena Road and Carter Corner Road beginning today for the installation of utility street crossings. The road is scheduled to reopen Nov. 14. For more information, call 740-833-2400.

INDEX

- Obituaries ... Page 5
- Calendars ... Page 5
- Lifestyle ... Page 6
- Sports ... Page 9
- TV Listings ... Page 14
- Classified ... Page 15
- Comics ... Page 20



Thank you, Cecil Millum, for subscribing to *The Delaware Gazette*, and thank you, AAA Ohio Auto, for your advertising support.

DELAWARE, OHIO
188TH YEAR
VOLUME No. 253



The Delaware Gazette



www.delgazette.com

MONDAY, OCTOBER 30, 2006

50 CENTS



Gazette Amy Allan

Crews from the Delaware City fire department and Delaware police department blocked off portions of East William Street Saturday morning as firefighters battled an apartment fire that began near a furnace inside the building at 65 E. William St.

Families escape fire

Saturday morning blaze started near furnace, officials say

Staff reports

A Saturday morning apartment fire left three families without a home over the weekend.

The fire at 65 E. William St., first reported at 9:50 a.m., began near a gas furnace that officials said was located between the first-floor ceiling and the second floor.

When firefighters arrived on the scene at 9:55 a.m., they saw heavy smoke on the second floor of the 12-unit apartment building.

After being informed of occupants still in the building, fire crews entered the building and conducted a search, but they determined all residents had successfully escaped. However, several family

pets died in the fire.

Firefighters contained the fire by 10:02 a.m. and extinguished all flames by 10:24 a.m.

Residents from the building took shelter in the community room of the Delaware County District Library as crews fought the fire.

Nine residents were displaced due to the fire. Members of the American Red Cross provided temporary housing for two families. A third family found local housing.

Fire damage was limited to a second-floor apartment and the first-floor apartment directly below.

Smoke damage was reported in another second-floor apartment as well.

Early damage estimates from the fire department set losses at approximately \$20,000.

newsroom@delgazette.com



Gazette Amy Allan

Lenora Hackathorn shows off her West Highland Terrier, Danny Boy's Jordan O'Sara, as judge Patricia Keenan inspects the dog during the Delaware Ohio Kennel Club Dog Show Saturday.

Gone to the dogs

Dog show brings in participants, judges from all across the country

By MARK A. CLAFFEY
Staff Writer

Having fun.

That's the key to success when exhibiting in dog shows, according to Delaware resident Nanette Wright, who was one of thousands of exhibitors who brought dogs to the Delaware Ohio Kennel Club dog show at the Delaware County Fairgrounds this past weekend.

"You also have to have a great relationship with your dog, and of course there has to be a lot of training and exercise involved," Wright said. "You've also got to be pleasant and be patient with yourself and your dog when you are in front of that judge."

Wright has been exhibiting at the DOKC dog show for the past 25 years and has brought breeds

Please see DOGS, Page 3

Pick of the patch



Gazette Amy Allan

Buckeye Valley sophomore Luke Meenach hands a pumpkin to 2-year-old Eric Stewart, who dressed as a firefighter and braved the wind and cold with his father, Scott, during Delaware's annual Halloween Festival Saturday at Mingo Park. The event featured pumpkin carving and plenty of treats.



Gloria and Dick Dodge have both battled cancer over the course of their 54-year marriage. Today, they are both in good health.

Gazette Amy Allan

Dodges work as a team

By CONNIE E. CURRY
Special to the Gazette

OUR NEIGHBORS

Submit your nominee to
newsroom@delgazette.com

Gloria Dodge, 75, is a wife, mother of three sons, grandmother to seven, great-grandmother to one and a two-time breast cancer survivor. Her life is full of laughter, love and a marriage that is solid as a rock. Humor is abundant, and her devotion to her family and home are obvious when listening to her interact with her husband, Dick.

She grew up Gloria Brust on Harriet Road, not far from where she and Dick, to whom she has been married for 54 years, have made a home. Gloria attended Jerome Elementary School until eighth grade.

Dick grew up on a farm in Union County, attended New California High School and met Gloria when she started ninth grade there. After graduating, they continued dating as they continued their educations. Dick attended Ohio State University and joined the National Guard. He mar-

ried Gloria in 1952. His graduation was put on hold when his Air Force unit was called to active duty during the Korean War. After returning home, he went back to Ohio State, graduating in 1954 with a degree in education, and later getting his master's degree.

"I taught in the Columbus schools, at Lindon McKinley when the segregation was going on. It was a tough time," said Dick.

Gloria took a Cadet course at Ohio Northern University and taught school for 14 years at Bellpoint, later becoming the principal before the consolidation of Buckeye Valley schools. After teaching, she began working at Conklin Farms as a

Please see TEAM, Page 3

7% FOR 2007

APR*

The Bank Real People. Smart Banking.

THE DELAWARE COUNTY BANK & TRUST

Find out how a 7%^{APR} Loan/Line can make 2007 lucky for you.

740-657-7200 | www.webdcb.com

*The 7% APR is an offer for any new or existing 8-member or more credit unions exceeding \$10,000 excluding funds used to pay off existing Delaware County Bank and Trust Company debt. The rate will be fixed for all of 2007. On 11/1/07, the rate reverts to the rate disclosed in the member's disclosure statement. Member must have a direct credit score greater than 600 and use to value (TV) not exceeding 90%. The variable Annual Percentage Rate (APR) for the line is as low as prime minus .50% (currently 7.75% APR) to prime + .4% (currently 12.5% APR), not to exceed 22%. Credit limit is based on loan to value ratio and credit qualifications. The closing costs: A annual fee of \$20.00 is charged at the beginning of each year and waived the first year. An early termination fee of \$250.00 will be charged if the account closes within 90 months. Property Title and/or Flood Insurance, if applicable, is required. Consult your advisor about the insurability of interest. The 7.00% APR is in effect for loans repayable longer than 120 days. 1.75% not exceeding 80% and 2.00% not exceeding 80% and 2.50% not exceeding 80% and 3.00% not exceeding 80% and 3.50% not exceeding 80% and 4.00% not exceeding 80% and 4.50% not exceeding 80% and 5.00% not exceeding 80% and 5.50% not exceeding 80% and 6.00% not exceeding 80% and 6.50% not exceeding 80% and 7.00% not exceeding 80% and 7.50% not exceeding 80% and 8.00% not exceeding 80% and 8.50% not exceeding 80% and 9.00% not exceeding 80% and 9.50% not exceeding 80% and 10.00% not exceeding 80% and 10.50% not exceeding 80% and 11.00% not exceeding 80% and 11.50% not exceeding 80% and 12.00% not exceeding 80% and 12.50% not exceeding 80% and 13.00% not exceeding 80% and 13.50% not exceeding 80% and 14.00% not exceeding 80% and 14.50% not exceeding 80% and 15.00% not exceeding 80% and 15.50% not exceeding 80% and 16.00% not exceeding 80% and 16.50% not exceeding 80% and 17.00% not exceeding 80% and 17.50% not exceeding 80% and 18.00% not exceeding 80% and 18.50% not exceeding 80% and 19.00% not exceeding 80% and 19.50% not exceeding 80% and 20.00% not exceeding 80% and 20.50% not exceeding 80% and 21.00% not exceeding 80% and 21.50% not exceeding 80% and 22.00% not exceeding 80% and 22.50% not exceeding 80% and 23.00% not exceeding 80% and 23.50% not exceeding 80% and 24.00% not exceeding 80% and 24.50% not exceeding 80% and 25.00% not exceeding 80% and 25.50% not exceeding 80% and 26.00% not exceeding 80% and 26.50% not exceeding 80% and 27.00% not exceeding 80% and 27.50% not exceeding 80% and 28.00% not exceeding 80% and 28.50% not exceeding 80% and 29.00% not exceeding 80% and 29.50% not exceeding 80% and 30.00% not exceeding 80% and 30.50% not exceeding 80% and 31.00% not exceeding 80% and 31.50% not exceeding 80% and 32.00% not exceeding 80% and 32.50% not exceeding 80% and 33.00% not exceeding 80% and 33.50% not exceeding 80% and 34.00% not exceeding 80% and 34.50% not exceeding 80% and 35.00% not exceeding 80% and 35.50% not exceeding 80% and 36.00% not exceeding 80% and 36.50% not exceeding 80% and 37.00% not exceeding 80% and 37.50% not exceeding 80% and 38.00% not exceeding 80% and 38.50% not exceeding 80% and 39.00% not exceeding 80% and 39.50% not exceeding 80% and 40.00% not exceeding 80% and 40.50% not exceeding 80% and 41.00% not exceeding 80% and 41.50% not exceeding 80% and 42.00% not exceeding 80% and 42.50% not exceeding 80% and 43.00% not exceeding 80% and 43.50% not exceeding 80% and 44.00% not exceeding 80% and 44.50% not exceeding 80% and 45.00% not exceeding 80% and 45.50% not exceeding 80% and 46.00% not exceeding 80% and 46.50% not exceeding 80% and 47.00% not exceeding 80% and 47.50% not exceeding 80% and 48.00% not exceeding 80% and 48.50% not exceeding 80% and 49.00% not exceeding 80% and 49.50% not exceeding 80% and 50.00% not exceeding 80% and 50.50% not exceeding 80% and 51.00% not exceeding 80% and 51.50% not exceeding 80% and 52.00% not exceeding 80% and 52.50% not exceeding 80% and 53.00% not exceeding 80% and 53.50% not exceeding 80% and 54.00% not exceeding 80% and 54.50% not exceeding 80% and 55.00% not exceeding 80% and 55.50% not exceeding 80% and 56.00% not exceeding 80% and 56.50% not exceeding 80% and 57.00% not exceeding 80% and 57.50% not exceeding 80% and 58.00% not exceeding 80% and 58.50% not exceeding 80% and 59.00% not exceeding 80% and 59.50% not exceeding 80% and 60.00% not exceeding 80% and 60.50% not exceeding 80% and 61.00% not exceeding 80% and 61.50% not exceeding 80% and 62.00% not exceeding 80% and 62.50% not exceeding 80% and 63.00% not exceeding 80% and 63.50% not exceeding 80% and 64.00% not exceeding 80% and 64.50% not exceeding 80% and 65.00% not exceeding 80% and 65.50% not exceeding 80% and 66.00% not exceeding 80% and 66.50% not exceeding 80% and 67.00% not exceeding 80% and 67.50% not exceeding 80% and 68.00% not exceeding 80% and 68.50% not exceeding 80% and 69.00% not exceeding 80% and 69.50% not exceeding 80% and 70.00% not exceeding 80% and 70.50% not exceeding 80% and 71.00% not exceeding 80% and 71.50% not exceeding 80% and 72.00% not exceeding 80% and 72.50% not exceeding 80% and 73.00% not exceeding 80% and 73.50% not exceeding 80% and 74.00% not exceeding 80% and 74.50% not exceeding 80% and 75.00% not exceeding 80% and 75.50% not exceeding 80% and 76.00% not exceeding 80% and 76.50% not exceeding 80% and 77.00% not exceeding 80% and 77.50% not exceeding 80% and 78.00% not exceeding 80% and 78.50% not exceeding 80% and 79.00% not exceeding 80% and 79.50% not exceeding 80% and 80.00% not exceeding 80% and 80.50% not exceeding 80% and 81.00% not exceeding 80% and 81.50% not exceeding 80% and 82.00% not exceeding 80% and 82.50% not exceeding 80% and 83.00% not exceeding 80% and 83.50% not exceeding 80% and 84.00% not exceeding 80% and 84.50% not exceeding 80% and 85.00% not exceeding 80% and 85.50% not exceeding 80% and 86.00% not exceeding 80% and 86.50% not exceeding 80% and 87.00% not exceeding 80% and 87.50% not exceeding 80% and 88.00% not exceeding 80% and 88.50% not exceeding 80% and 89.00% not exceeding 80% and 89.50% not exceeding 80% and 90.00% not exceeding 80% and 90.50% not exceeding 80% and 91.00% not exceeding 80% and 91.50% not exceeding 80% and 92.00% not exceeding 80% and 92.50% not exceeding 80% and 93.00% not exceeding 80% and 93.50% not exceeding 80% and 94.00% not exceeding 80% and 94.50% not exceeding 80% and 95.00% not exceeding 80% and 95.50% not exceeding 80% and 96.00% not exceeding 80% and 96.50% not exceeding 80% and 97.00% not exceeding 80% and 97.50% not exceeding 80% and 98.00% not exceeding 80% and 98.50% not exceeding 80% and 99.00% not exceeding 80% and 99.50% not exceeding 80% and 100.00% not exceeding 80% and 100.50% not exceeding 80% and 101.00% not exceeding 80% and 101.50% not exceeding 80% and 102.00% not exceeding 80% and 102.50% not exceeding 80% and 103.00% not exceeding 80% and 103.50% not exceeding 80% and 104.00% not exceeding 80% and 104.50% not exceeding 80% and 105.00% not exceeding 80% and 105.50% not exceeding 80% and 106.00% not exceeding 80% and 106.50% not exceeding 80% and 107.00% not exceeding 80% and 107.50% not exceeding 80% and 108.00% not exceeding 80% and 108.50% not exceeding 80% and 109.00% not exceeding 80% and 109.50% not exceeding 80% and 110.00% not exceeding 80% and 110.50% not exceeding 80% and 111.00% not exceeding 80% and 111.50% not exceeding 80% and 112.00% not exceeding 80% and 112.50% not exceeding 80% and 113.00% not exceeding 80% and 113.50% not exceeding 80% and 114.00% not exceeding 80% and 114.50% not exceeding 80% and 115.00% not exceeding 80% and 115.50% not exceeding 80% and 116.00% not exceeding 80% and 116.50% not exceeding 80% and 117.00% not exceeding 80% and 117.50% not exceeding 80% and 118.00% not exceeding 80% and 118.50% not exceeding 80% and 119.00% not exceeding 80% and 119.50% not exceeding 80% and 120.00% not exceeding 80% and 120.50% not exceeding 80% and 121.00% not exceeding 80% and 121.50% not exceeding 80% and 122.00% not exceeding 80% and 122.50% not exceeding 80% and 123.00% not exceeding 80% and 123.50% not exceeding 80% and 124.00% not exceeding 80% and 124.50% not exceeding 80% and 125.00% not exceeding 80% and 125.50% not exceeding 80% and 126.00% not exceeding 80% and 126.50% not exceeding 80% and 127.00% not exceeding 80% and 127.50% not exceeding 80% and 128.00% not exceeding 80% and 128.50% not exceeding 80% and 129.00% not exceeding 80% and 129.50% not exceeding 80% and 130.00% not exceeding 80% and 130.50% not exceeding 80% and 131.00% not exceeding 80% and 131.50% not exceeding 80% and 132.00% not exceeding 80% and 132.50% not exceeding 80% and 133.00% not exceeding 80% and 133.50% not exceeding 80% and 134.00% not exceeding 80% and 134.50% not exceeding 80% and 135.00% not exceeding 80% and 135.50% not exceeding 80% and 136.00% not exceeding 80% and 136.50% not exceeding 80% and 137.00% not exceeding 80% and 137.50% not exceeding 80% and 138.00% not exceeding 80% and 138.50% not exceeding 80% and 139.00% not exceeding 80% and 139.50% not exceeding 80% and 140.00% not exceeding 80% and 140.50% not exceeding 80% and 141.00% not exceeding 80% and 141.50% not exceeding 80% and 142.00% not exceeding 80% and 142.50% not exceeding 80% and 143.00% not exceeding 80% and 143.50% not exceeding 80% and 144.00% not exceeding 80% and 144.50% not exceeding 80% and 145.00% not exceeding 80% and 145.50% not exceeding 80% and 146.00% not exceeding 80% and 146.50% not exceeding 80% and 147.00% not exceeding 80% and 147.50% not exceeding 80% and 148.00% not exceeding 80% and 148.50% not exceeding 80% and 149.00% not exceeding 80% and 149.50% not exceeding 80% and 150.00% not exceeding 80% and 150.50% not exceeding 80% and 151.00% not exceeding 80% and 151.50% not exceeding 80% and 152.00% not exceeding 80% and 152.50% not exceeding 80% and 153.00% not exceeding 80% and 153.50% not exceeding 80% and 154.00% not exceeding 80% and 154.50% not exceeding 80% and 155.00% not exceeding 80% and 155.50% not exceeding 80% and 156.00% not exceeding 80% and 156.50% not exceeding 80% and 157.00% not exceeding 80% and 157.50% not exceeding 80% and 158.00% not exceeding 80% and 158.50% not exceeding 80% and 159.00% not exceeding 80% and 159.50% not exceeding 80% and 160.00% not exceeding 80% and 160.50% not exceeding 80% and 161.00% not exceeding 80% and 161.50% not exceeding 80% and 162.00% not exceeding 80% and 162.50% not exceeding 80% and 163.00% not exceeding 80% and 163.50% not exceeding 80% and 164.00% not exceeding 80% and 164.50% not exceeding 80% and 165.00% not exceeding 80% and 165.50% not exceeding 80% and 166.00% not exceeding 80% and 166.50% not exceeding 80% and 167.00% not exceeding 80% and 167.50% not exceeding 80% and 168.00% not exceeding 80% and 168.50% not exceeding 80% and 169.00% not exceeding 80% and 169.50% not exceeding 80% and 170.00% not exceeding 80% and 170.50% not exceeding 80% and 171.00% not exceeding 80% and 171.50% not exceeding 80% and 172.00% not exceeding 80% and 172.50% not exceeding 80% and 173.00% not exceeding 80% and 173.50% not exceeding 80% and 174.00% not exceeding 80% and 174.50% not exceeding 80% and 175.00% not exceeding 80% and 175.50% not exceeding 80% and 176.00% not exceeding 80% and 176.50% not exceeding 80% and 177.00% not exceeding 80% and 177.50% not exceeding 80% and 178.00% not exceeding 80% and 178.50% not exceeding 80% and 179.00% not exceeding 80% and 179.50% not exceeding 80% and 180.00% not exceeding 80% and 180.50% not exceeding 80% and 181.00% not exceeding 80% and 181.50% not exceeding 80% and 182.00% not exceeding 80% and 182.50% not exceeding 80% and 183.00% not exceeding 80% and 183.50% not exceeding 80% and 184.00% not exceeding 80% and 184.50% not exceeding 80% and 185.00% not exceeding 80% and 185.50% not exceeding 80% and 186.00% not exceeding 80% and 186.50% not exceeding 80% and 187.00% not exceeding 80% and 187.50% not exceeding 80% and 188.00% not exceeding 80% and 188.50% not exceeding 80% and 189.00% not exceeding 80% and 189.50% not exceeding 80% and 190.00% not exceeding 80% and 190.50% not exceeding 80% and 191.00% not exceeding 80% and 191.50% not exceeding 80% and 192.00% not exceeding 80% and 192.50% not exceeding 80% and 193.00% not exceeding 80% and 193.50% not exceeding 80% and 194.00% not exceeding 80% and 194.50% not exceeding 80% and 195.00% not exceeding 80% and 195.50% not exceeding 80% and 196.00% not exceeding 80% and 196.50% not exceeding 80% and 197.00% not exceeding 80% and 197.50% not exceeding 80% and 198.00% not exceeding 80% and 198.50% not exceeding 80% and 199.00% not exceeding 80% and 199.50% not exceeding 80% and 200.00% not exceeding 80% and 200.50% not exceeding 80% and 201.00% not exceeding 80% and 201.50% not exceeding 80% and 202.00% not exceeding 80% and 202.50% not exceeding 80% and 203.00% not exceeding 80% and 203.50% not exceeding 80% and 204.00% not exceeding 80% and 204.50% not exceeding 80% and 205.00% not exceeding 80% and 205.50% not exceeding 80% and 206.00% not exceeding 80% and 206.50% not exceeding 80% and 207.00% not exceeding 80% and 207.50% not exceeding 80% and 208.00% not exceeding 80% and 208.50% not exceeding 80% and 209.00% not exceeding 80% and 209.50% not exceeding 80% and 210.00% not exceeding 80% and 210.50% not exceeding 80% and 211.00% not exceeding 80% and 211.50% not exceeding 80% and 212.00% not exceeding 80% and 212.50% not exceeding 80% and 213.00% not exceeding 80% and 213.50% not exceeding 80% and 214.00% not exceeding 80% and 214.50% not exceeding 80% and 215.00% not exceeding 80% and 215.50% not exceeding 80% and 216.00% not exceeding 80% and 216.50% not exceeding 80% and 217.00% not exceeding 80% and 217.50% not exceeding 80% and 218.00% not exceeding 80% and 218.50% not exceeding 80% and 219.00% not exceeding 80% and 219.50% not exceeding 80% and 220.00% not exceeding 80% and 220.50% not exceeding 80% and 221.00% not exceeding 80% and 221.50% not exceeding 80% and 222.00% not exceeding 80% and 222.50% not exceeding 80% and 223.00% not exceeding 80% and 223.50% not exceeding 80% and 224.00% not exceeding 80% and 224.50% not exceeding 80% and 225.00% not exceeding 80% and 225.50% not exceeding 80% and 226.00% not exceeding 80% and 226.50% not exceeding 80% and 227.00% not exceeding 80% and 227.50% not exceeding 80% and 228.00% not exceeding 80% and 228.50% not exceeding 80% and 229.00% not exceeding 80% and 229.50% not exceeding 80% and 230.00% not exceeding 80% and 230.50% not exceeding 80% and 231.00% not exceeding 80% and 231.50% not exceeding 80% and 232.00% not exceeding 80% and 232.50% not exceeding 80% and 233.00% not exceeding 80% and 233.50% not exceeding 80% and 234.00% not exceeding 80% and 234.50% not exceeding 80% and 235.00% not exceeding 80% and 235.50% not exceeding 80% and 236.00% not exceeding 80% and 236.50% not exceeding 80% and 237.00% not exceeding 80% and 237.50% not exceeding 80% and 238.00% not exceeding 80% and 238.50% not exceeding 80% and 239.00% not exceeding 80% and 239.50% not exceeding 80% and 240.00% not exceeding 80% and 240.50% not exceeding 80% and 241.00% not exceeding 80% and 241.50% not exceeding 80% and 242.00% not exceeding 80% and 242.50% not exceeding 80% and 243.00% not exceeding 80% and 243.50% not exceeding 80% and 244.00% not exceeding 80% and 244.50% not exceeding 80% and 245.00% not exceeding 80% and 245.50% not exceeding 80% and 246.00% not exceeding 80% and 246.50% not exceeding 80% and 247.00% not exceeding 80% and 247.50% not exceeding 80% and 248.00% not exceeding 80% and 248.50% not exceeding 80% and 249.00% not exceeding 80% and 249.50% not exceeding 80% and 250.00% not exceeding 80% and 250.50% not exceeding 80% and 251.00% not exceeding 80% and 251.50% not exceeding 80% and 252.00% not exceeding 80% and 252.50% not exceeding 80% and 253.00% not exceeding 80% and 253.50% not exceeding 80% and 254.00% not exceeding 80% and 254.50% not exceeding 80% and 255.00% not exceeding 80% and 255.50% not exceeding 80% and 256.00% not exceeding 80% and 256.50% not exceeding 80% and 257.00% not exceeding 80% and 257.50% not exceeding 80% and 258.00% not exceeding 80% and 258.50% not exceeding 80% and 259.00% not exceeding 80% and 259.50% not exceeding 80% and 260.00% not exceeding 80% and 260.50% not exceeding 80% and 261.00% not exceeding 80% and 261.50% not exceeding 80% and 262.00% not exceeding

Pilot said to have ignored advice from air traffic control in crash that killed 96

By BASHIR ADIGUN
Associated Press Writer

ABUJA, Nigeria — The Nigerian pilot of a plane that crashed on takeoff, killing him and 95 other people, did not heed air traffic controllers' advice to not depart in stormy weather, the minister of aviation said today.

Aviation Minister Babalola Borishade did not directly blame pilot error in Sunday's crash, the nation's third major jet accident in less than a year, but he said officials would try to curb pilots' power to ignore advice from the control tower.

Borishade said all of private Nigerian airline Aviation Development Co.'s planes had been grounded indefinitely and its flying license was suspended.

Nine people survived the crash. Investigators found one of two black boxes from the Boeing 737 late Sunday. It was not immediately known whether it was the flight data recorder or the cockpit voice recorder.

The airline last suffered a crash in November 1996, when one of its jets plunged into a lagoon outside Nigeria's main city, Lagos, killing all 143 aboard.

On Sunday, the jetliner was carrying 100 passengers and five crew when it went down just moments after taking off from Nigeria's capital.

"The pilot of the unfortunate accident refused to take advantage of the weather advice and the opinion of the (control) tower to exercise patience and allow the weather to clear for a safe take-off," Borishade said at a news conference.

"The discretionary power of the air crew to override advice from the tower has been largely responsible for unfortunate consequences in the history of air mishaps in this country," Borishade said. "The federal government has directed the National Civil Aviation Authority to look into this and prepare appropriate guidelines to stop this reckless abuse of crew discretionary power ... to ensure safety."



Gazette Amy Allan

Cody Dunn and Tate Hummel help Delaware resident Harold Fryman unload and dispose of some old tires Saturday during the hazardous waste collection day held at the Delaware County Fairgrounds.

Record numbers at hazardous waste collection event Saturday

By MARK A. CLAFFEY
Staff Writer

Saturday's hazardous waste collection at the Delaware County Fairgrounds drew record numbers, according to Keith Bailey, director of the Delaware, Knox, Marion, Morrow (DKMM) Solid Waste District.

"It's definitely more people than we expected," Bailey said as motorists were stacked up from the fairgrounds' Liberty Street exit all the way back to Pennsylvania Avenue and Sandusky Street.

The event was held from 9 a.m. to 3 p.m. Saturday.

Bailey said the traffic tie-ups along Pennsylvania Avenue and Liberty Street were caused because the DKMM Solid Waste District was sharing the fairgrounds with the Delaware Ohio Kennel Club.

"Before we signed the contract to use the fairgrounds, we were told we had the entire use of the facilities," Bailey said. "After we signed, we were told we had to split the fairgrounds with the dog show."

Bailey said the hazardous waste disposal would have "worked better" if motorists could have entered one fairgrounds entrance and left another. On Saturday, motorists were entering from and exiting to Liberty Street.

The Delaware police department informed Bailey at 11:30 a.m. that traffic tie-ups and congestion were causing concerns from the neighborhood and suggested the solid waste district either come up

with a new enter/exit strategy or hire off-duty police officers to assist with traffic in the future.

Bailey said things will be different when the solid waste district holds another waste disposal day in Delaware County in 2008.

"We won't have this problem again, I assure you," Bailey said.

The solid waste district's next hazardous waste disposal day in 2007 will be held somewhere in Knox or Marion counties, Bailey said.

Josh Weber, of Clean Harbors which assisted the solid waste district with disposal of items, said approximately 70 cars were being assisted per hour during the drop off.

According to its Web site, found at www.clean-harbors.com, the company is considered North America's leading provider of environmental and hazardous waste management services. Headquartered in Norwell, Mass., Clean Harbors has more than 100 locations throughout North America in 37 states, six Canadian provinces, Mexico and Puerto Rico.

Weber said materials such as oil-based paints, fertilizers and tires were accepted Saturday.

"We haven't received anything out of the ordinary that we couldn't handle today," Weber said a few hours into the day.

Computer components and cellular phones were also accepted for recycling and reprogramming.

mclaffey@delgazette.com

U.S. national security adviser makes surprise visit to Baghdad

By SINAN SALAHEDDIN
Associated Press Writer

BAGHDAD, Iraq — U.S. National Security Adviser Stephen Hadley met today with his Iraqi counterpart to discuss military and political coordination during a surprise visit to Baghdad.

The Iraqi government said Hadley met with Mouwafak al-Rubaie in his Green Zone office to follow up on a decision late last week to form a joint commission to coordinate U.S.-Iraqi relations, especially military activity.

The commission was established in a video conference Saturday between President Bush and Iraqi Prime Minister Nouri al-Maliki, who has issued a series of critical statements about American policy in Iraq over the past week.

"The two sides discussed the work of the committee which agreed to by between the prime minister and the American president and is designed to coordinate development of the Iraqi security forces, expedite military training, reconciliation among Iraqis and the war against terrorism," the government said in a statement.

Dogs

■ CONTINUED FROM PAGE 1

such as Labrador Retrievers, German Short Haired Pointers and Cavalier King Charles Spaniels to the fairgrounds in search of awards.

She said the DOKC is well attended by people from all over Central Ohio and throughout the country because of its "family-like" atmosphere.

"Everybody seems to know everybody here," Wright said. "You also get a nice crowd of local residents who come in to witness the show."

Exhibitors and judges attended this past weekend's show from Indiana, Colorado, Virginia, Michigan, Illinois, North Carolina, South Carolina, Kentucky, New Hampshire and as far away as California.

The event also drew exhibitors from Canada.

DOKC president Dennis Kniola said the key to bringing in more than 1,200 dogs and their exhibitors is having good judges.

"Judges make a dog show," Kniola said. "If your judges are firm and fair, then that will draw a good crowd."

Kniola said it also doesn't hurt that the DOKC dog show is held at the same time every year.

"We are always held the weekend of Halloween and are usually the only dog show held in Central Ohio this time of year," Kniola said. "Those things help to give us a pretty good crowd every year."

Sunbury resident Sue O'Farrell has been coming to the DOKC dog show for the past 15 years and said the show can credit its success to its organizers.

"Everything is run so smoothly here, you just have to be prepared to dress with the weather because its usually pretty cold," O'Farrell said.

O'Farrell knows a thing or two about dog shows.

She said she travels to at least two shows a month every year and recently took her Chihuahua to a show in Florida.

DOKC vice president Lamont Yoder said a Best of Show winner was named during both days of the show and a total of 1,424 dogs were exhibited during the event.

"That's about 200 more dogs than we had last year," Yoder said.

Yoder said the DOKC had a high of 1,700 dogs exhibited in 1998.

Proceeds from the event will be donated to various charities, including the DOKC Veterinary Scholarship Fund.

The last recipient of that award, according to Lynne Hlavin, DOKC spokesperson, was Sarah Fosnaugh. The organization as also given financial assistance to Canine Citizens for Independence, AKC Foundation for Research, American Dog Owners Association and the Humane Society of Delaware County and the county dog warden.

In addition, the DOKC has sponsored AKC breed seminars to teach the correct standard, type and movement of AKC-registered breeds.

mclaffey@delgazette.com

TEAM

■ CONTINUED FROM PAGE 1

secretary and retired from there after 23 years.

In 1952, Rob Brust, Gloria's father, owned a field off Dublin Road and, with help from Dick, turned it into a subdivision named Concord Meadows. It was traveled by the two men and homes were built and it was named Brust Drive. Today, Gloria and Dick's children also own homes on the secluded road. Brust Drive will be full of celebration when Gloria and Dick's grandson, Tom, returns home from Baghdad, where he currently is serving in the Army.

Gloria's mom died of liver and lung cancer. In November 1991, when Gloria was told she had breast cancer, she cried a few tears but forged ahead with a positive attitude. A slender woman with much style and class, she set out to adjust to this misfortune.

"I was OK about losing a breast," she said. "I wanted the cancer out of me. Why borrow more trouble? Things like this happen; I knew I could live through it."

When the mass was discovered by Gloria's family doctor, a biopsy was done and a mastectomy scheduled. The pathology report showed not only the one mass that was already confirmed to be cancer, but also a second lump in the tissue that was found to be cancerous.

Gloria elected to not have reconstruction of her right breast and was fitted for prosthesis.

"The nurses at Grady Memorial were wonderful.

When I got fitted for my prosthesis, I felt good again," she said. "That Thanksgiving, during my treatment, my daughter-in-law, Janie, insisted she would fix our family feast. She has done it ever since. My wonderful family has helped a lot."

Chemotherapy was started and took six months to complete because Gloria's white blood count was too low, a common problem among chemotherapy patients. Dick would feed her liver and spinach in an effort to get her blood count up. Gloria still chuckles about that.

Women tend to worry about the loss of their hair when they start chemo, and Gloria was concerned, too.

"I bought a wig and I never had to wear it. My hair thinned but I never lost all of it from chemo," Gloria said. "Jan, my hairstylist, did a good job working with my hair as it thinned."

In June 1992, soon after starting her own treatment, Dick was diagnosed with prostate cancer.

"I worried more about Dick than myself," Gloria said.

"We were Romeo and Juliet with cancer," Dick said, reminiscing about what they endured together.

Although Gloria had 23 lymph nodes removed in her right arm, she has not suffered with lymphodema, a condition caused from the dissection of nodes.

"I did my exercises, and have not had any problems," Gloria said as she stretched and lifted her arm above her head to validate no side effects. The best news was hearing she did not

have cancer in her lymph nodes.

Gloria started on Tamoxifen, a drug given to decrease the chance of a reoccurrence of breast cancer. She took it for almost six years, but in January 1998, Gloria's breast cancer returned. A small growth, the size of a pea, was discovered on the incision where her mastectomy had been done.

"We are not waiting," Dick told her, and they called the doctor. It was confirmed; the cancer was back, and this time she began a vigorous radiation treatment. "I did 30 rounds of radiation five days a week.

Radiation was harder on me than the chemo," Gloria said as she talked about how it burned her fair skin.

Although Gloria will have to take Arimidex, another oral post-menopausal medication for breast cancer patients, for the rest of her life, she continues to be optimistic. She never worries when she has her annual mammogram.

"I always worry more about my family," she said. "I remember the day Dick went in for his prostate surgery. I was so worried. I looked at our son, Rob, and he said, 'Mom, Dad is going to be just fine.'"

And after 54 years of marriage, they are just that ... fine. Dick retired in 1986 and Gloria in 1996. They are both in relatively good health and are always on the go. They have a big interest in sports. Much of their time is spent going to watch their grandchildren participate in school activities. They have supported Buckeye Valley for years as the second generation of Dodges continues

to stand out in school sports.

Gloria baby-sits two days a week for one of her grandsons and they devote a lot of time to family and filling in for their busy kids while they work. After all, all their homes are just feet away.

Gloria's love of flowers is obvious when one views her beautiful flower garden and her collection of dogwood. Dick collects foxes and has a huge array from drawings to ceramic fox in their home.

"Gloria is my Siamese twin," Dick said with a smile. "She's my cheerleader."

Just this summer, they teamed up to do some home improvements. They sided and stoned the outside of their home — not bad for a couple in their mid-70s.

"Dick was in charge. I held stuff up so he could measure. BUT, I picked which stone to put where," Gloria said.

"And Gloria is my country-city girl," Dick said. "The secret to a happy, healthy marriage is to compromise. Always compromise ... and we always end up doing what Gloria wants," Dick said, smiling.

newsroom@delgazette.com

TRIMBLE INSURANCE AGENCY INC.
740-369-6711
www.trimbleins.com

HOLLYWOOD STUDIO THEATRES
MOVIES 5
DELAWARE SQUARE
24 hour info: 740-363-6634
\$4.00 ALL SHOWS BEFORE 6 PM
CHILD, SENIORS, STUDENTS
ADULTS AFTER 6 PM **\$6.00**
THE GRUDGE 2
4:30 7:30 PG13
TEXAS CHAINSAW MASSACRE:
THE BEGINNING 4:20 7:20 R
THE DEPARTED
4:00 7:00 R
EMPLOYEE OF THE MONTH
4:10 7:10 PG13
OPEN SEASON
4:40 6:50 PG
COMING SOON:
FLUSHED AWAY, HAPPY FEET
UNDER NEW MANAGEMENT

STRAND THEATRE
Delaware's downtown historic movie house
28 WINTER STREET
363-4914
SAW III (R)
MON.-THUR: 4:30 & 7:30
FLAGS OF OUR FATHERS (R)
MON.-THUR: 4:30 & 7:00
MAN OF THE YEAR (PG-13)
MON.-WED: 4:30 & 7:15
THUR: 4:30
WEDNESDAY IS BARGAIN NIGHT
ALL SEATS \$4.00

MARCUS THEATRES
CATCH THE EARLY BIRD!
\$4.00 ADMISSION FOR SHOWS IN ()
\$6.00 EVENING ADMISSION PRICE
ULTRA SCREEN®
✓ SAW 3 (R) (1230) 255 520 745 1005
✓ ALEX RIDER OPERATION STORMBREAKER (PG) (1250) 255 500 710 920
✓ CATCH A FIRE (PG-13) (1245) 250 505 720 940
✓ RUNNING WITH SCISSORS (R) (120) 400 700 940
THE DEPARTED (R) (100) 200 415 515 735 910
FRI@415 SAT@100 SUN@735
THURSDAY@100 200 415 735
EMPLOYEE OF THE MONTH (PG13) (115) 345 650 910
FACING THE GIANTS (PG) (115) 400 645 930
✓ FLICKA (PG) (1230) 245 500 725 945
THE GRUDGE (PG13) (130) 415 700 930
THE GUARDIAN (PG-13) (1245) 350 640 940
LITTLE MISS SUNSHINE (R) (130) 400 650 915
MAN OF THE YEAR (PG13) (130) 415 700 940
✓ MARIE ANTOINETTE (PG13) (120) 405 650 935
OPEN SEASON (PG) (1245) 300 515 735 950
✓ THE PRESTIGE (PG13) (1245) 335 640 930
✓ NO PICTURES ✓ EXTRA SPECIAL ATTRACTION
☐ = OPEN CAPTION ☐ = DESCRIPTIVE AUDIO
PICTURE ID REQUIRED FOR "R" RATED MOVIES
CHILDREN UNDER 6 NOT ALLOWED IN "R" RATED MOVIES
ALL FEATURES INCLUDE PRE-SHOW CONTENT. PREVIEWS OF
UPCOMING FILMS START AT ADVERTISED SHOWTIMES.
TIMES ARE SUBJECT TO CHANGE 808093

ravemotionpictures
Polaris 18
1074 Gemini Place
1-71 & Polaris W of Polaris Fashion Pk.
1-71 Southbound/Gemini Place Exit Now Open
614-781-8228
TIM BURTON'S
THE NIGHTMARE BEFORE CHRISTMAS IN 3-D (PG)
..... 2:30 4:50 7:30 9:50
SAW III (R) 5:00 7:45
SAW III (R) DLP 1:30 2:20 4:15 5:45 7:00 8:30 9:45
CATCH A FIRE (PG-13) 2:35 5:10 7:40 10:05
MARIE ANTOINETTE (PG-13) DLP 1:50 4:25 7:05 9:25
ALEX RIDER: OPERATION STORMBREAKER (PG) 2:25
EMPLOYEE OF THE MONTH (PG-13) 2:05 7:50
FLAGS OF OUR FATHERS (R) 1:40 3:55 4:45 7:10
8:10 10:05
FLICKA (PG) DLP 1:45 4:10 7:15 10:00
MAN OF THE YEAR (PG-13) DLP 1:35 4:05 7:25 9:55
ONE NIGHT WITH THE KING (PG) DLP 1:50 4:30
OPEN SEASON (PG) DLP 2:10 4:20 7:35 9:40
RUNNING WITH SCISSORS (R) DLP 2:15 5:05 8:00
TEXAS CHAINSAW MASSACRE (R) 5:20
THE DEPARTED (R) DLP 1:35 4:40 7:20 8:20
THE GRUDGE 2 (R) DLP 1:55 5:15 8:15
THE GUARDIAN (PG-13) DLP 2:00 4:55 7:55
THE PRESTIGE (PG-13) 1:40 4:35 8:05
Rave Motion Pictures is NOW HIRING!!!
Please see a Manager for an Application!!!
www.ravemotionpictures.com

FREE HEARING TEST AND CONSULTATION!
HUGHES FAMILY HEARING AID CENTER
50 Troy Road Shopping Center, Delaware
(across from Grady Hospital)
740-362-2845 or 800-287-9035

Crissman Refinishing
Porcelain & fiberglass bathtub
repair & refinishing
Whirlpool conversions
(convert a bathtub into a whirlpool without removing the tub!)
937-592-4795 or 800-341-1725